

Introduction

CORSIA in the RSB certification system

RSB & the Aviation Sector

Our ambition

A just transition to a net positive world



RSB: A just transition to a net positive world

RSB is leveraging its community, resources and best-in-class sustainability standard as part of a global movement **to create a world of positive impacts and a thriving planet** with:



1.5C warming cap achieved



Assured global nutrition and water access



Fossil left in the ground



Guaranteed human & labour rights



Maximum circularity



Productive and healthy ecosystems

What we do

RSB translates your sustainability commitment into action



1 Partnerships

- Fundraising / sustainability standard and expertise
- Supply chain development
- Policy and technical advice

2 Community

- Standard development
- Technical working groups
- Networking

5 GHG Calculator

3 Advisory Services

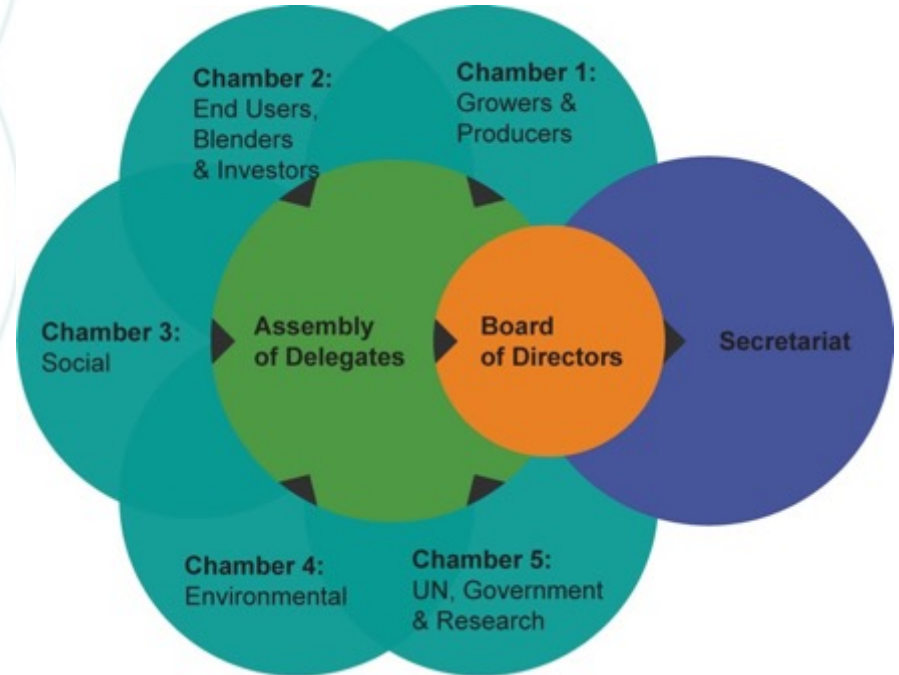
- Sustainability & risk assessments (feedstock, supply chain, procurement)
- GHG calculations
- Tailored trainings for certification

4 Certification

- Independent certification by third party
- Independent Accreditation Body
- Covers the full supply chain
- ISEAL member

Member governance

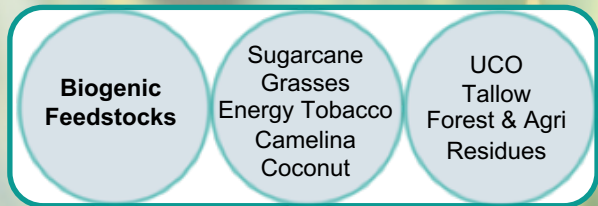
99	Members
32	Countries
5	Chambers
15	Chamber delegates



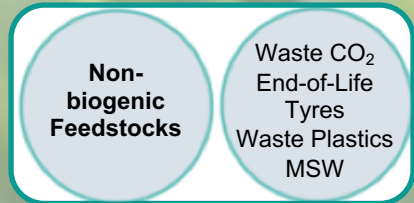
RSB Scope

Feedstock & product agnostic

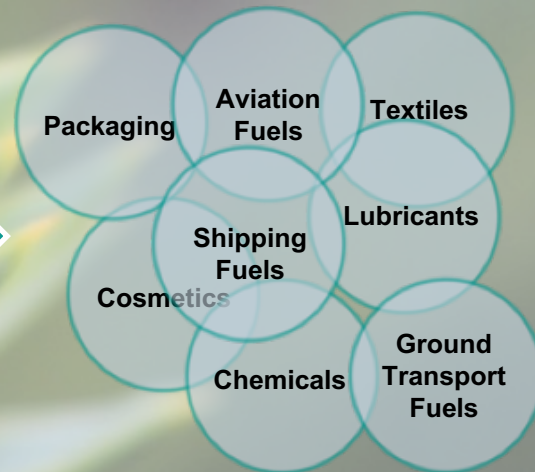
Examples of Bio-based Feedstocks



Examples of Recycled Carbon Feedstocks



Products



full supply chain advice & certification

Types of certification

RSB Certification Schemes



	Core Standard	Regulatory adaptations		
	RSB Global	RSB EU RED	RSB ICAO CORSIA	RSB Japan
Scope	Energy and non-energy products	Energy feedstocks and products for the the EU RED market	Sustainable Aviation Fuel	Biomass for power generation in Japan
Main Standards	RSB Standard for Advanced Fuels RSB Standard for Advanced Products RSB Smallholder Standard	RSB Standard for EU market access RSB EU RED Waste and Residue Standard	RSB Standard for ICAO CORSIA	RSB Standard for Japan FIT
Sustainability	RSB Principles & Criteria			
Indirect impacts	RSB Low ILUC Risk Biomass Module RSB Methodology for Displacement Emissions			

One third of RSB members are from the aviation sector



RSB certification commitments from leading SAF initiatives



Designated Technical Expert to participate in ICAO's AFTF and FTG



Global partnerships for SAF development, research & innovation



Support sector with sustainable feedstock mapping



Comms, events, co-branding opportunities



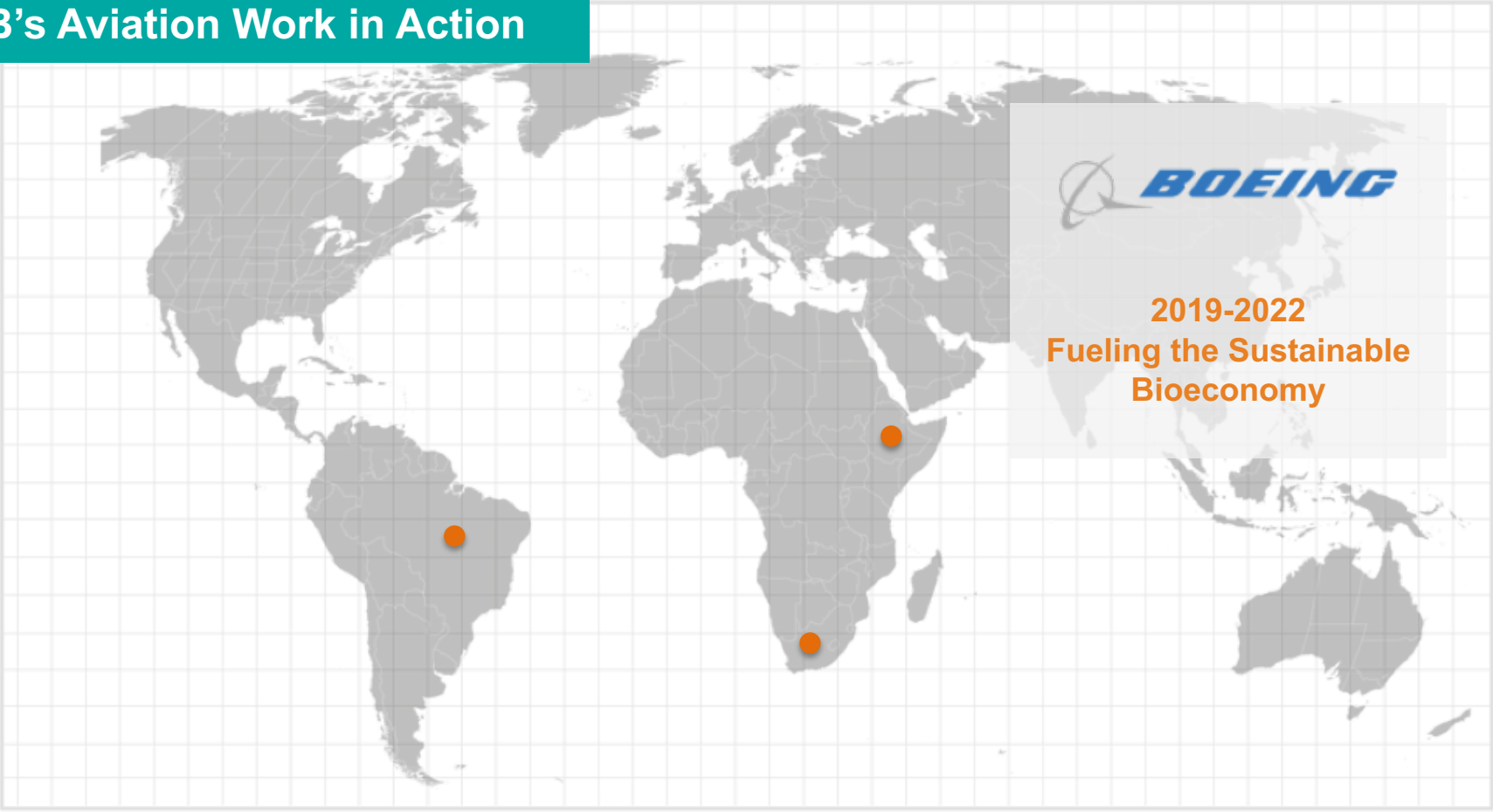
RSB certified SAF has at least 50% GHG reduction (>60% for new installations)

RSB's Aviation Work in Action

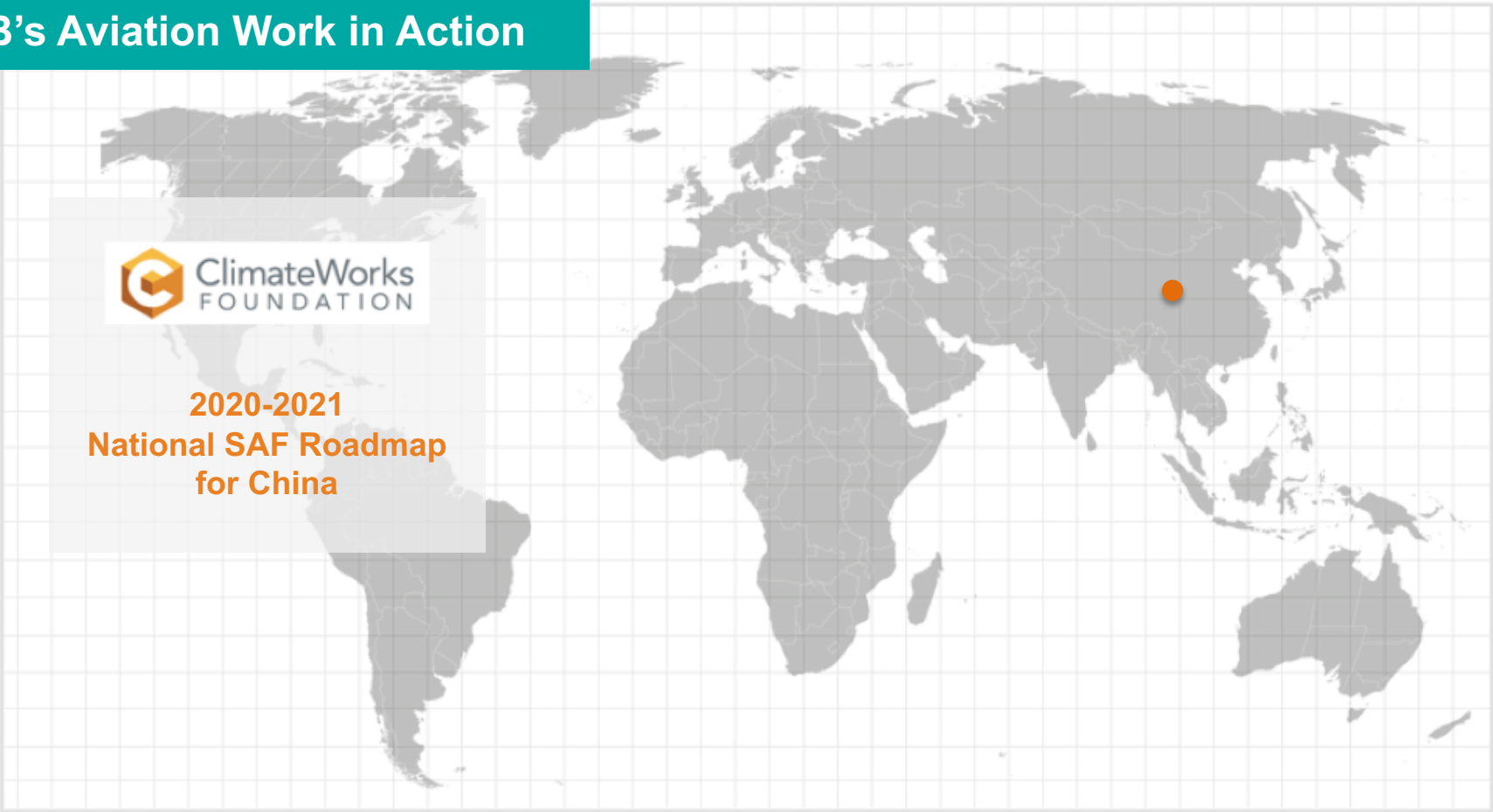


-  CERTIFICATIONS
-  PARTNERSHIPS
-  MEMBERS
-  ADVISORY SERVICES PROJECT

RSB's Aviation Work in Action



RSB's Aviation Work in Action



**2020-2021
National SAF Roadmap
for China**

RSB's Aviation Work in Action

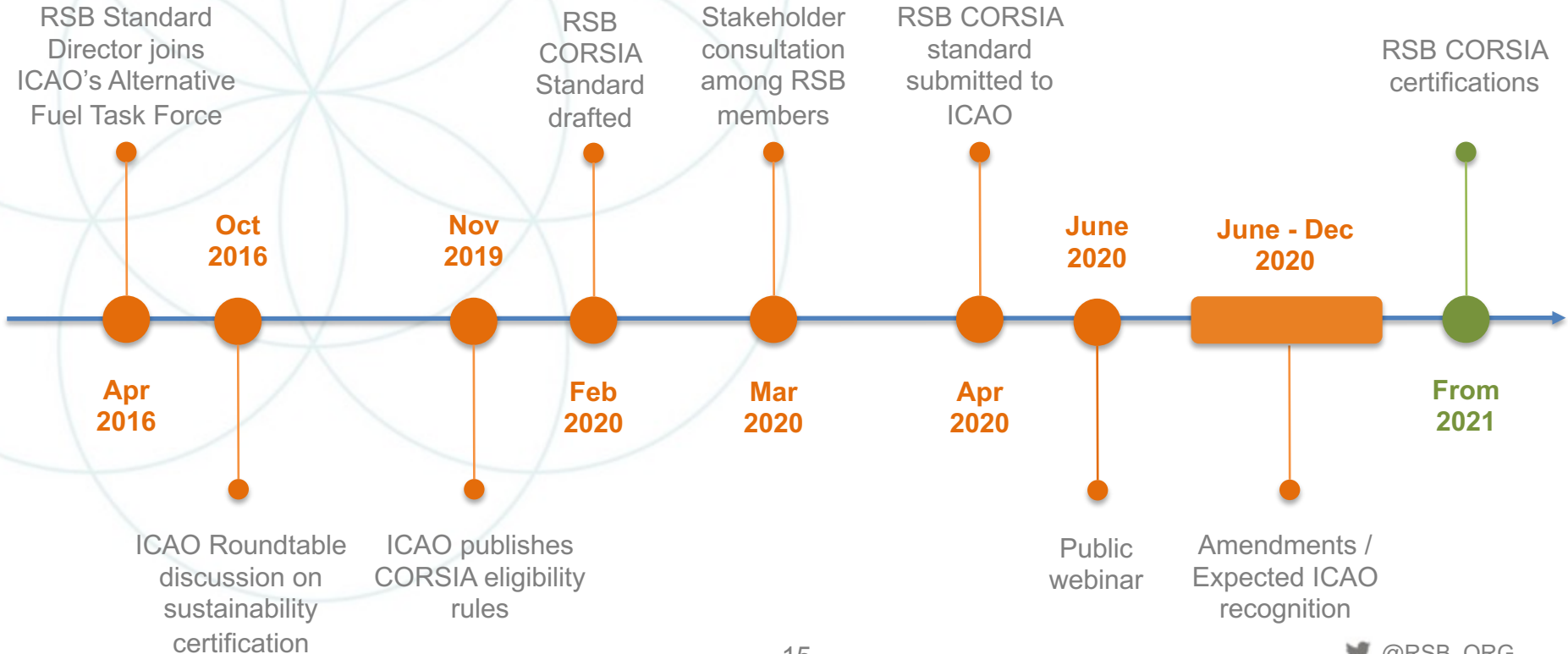


Horizon 2020
European Union funding
for Research & Innovation

Alight + FLITE projects

The RSB CORSIA Scheme

RSB CORSIA Standard timeline



In a snapshot



Only
SAF
Eligible

Based
on
12 RSB
P&C

Consider
end of life
products or
processing
residues

In a snapshot



Core
GHG LCA
> 60%
Fossil Base:
89 g CO₂e/MJ

Core GHG
LCA + ILUC
> 10%

Recognise
landfill and
recycling
emission
credits (LEC
& REC)

Sustainability Requirements



Principle 1
Legality



Principle 2
Planning,
Monitoring
& Continuous
Improvement



Principle 3
Greenhouse
Gas Emissions



Principle 4
Human & Labour
Rights



Principle 5
Rural and Social
Development



Principle 6
Local Food
Security



Principle 7
Conservation



Principle 8
Soil



Principle 9
Water



Principle 10
Air Quality



Principle 11
Use of Technology,
Inputs &
Management
of Waste



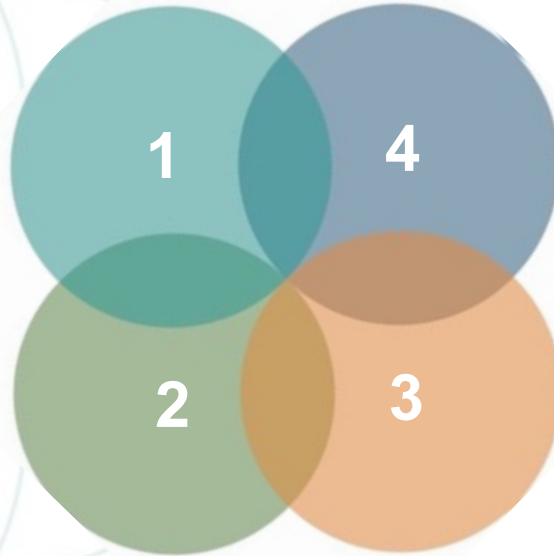
Principle 12
Land Rights

Ensuring Credibility



Ensuring Stakeholder Involvement in Standard-Setting & Assurance

Independent Benchmarks rank RSB as the Best Performing Sustainability Standard



Compliance with ISEAL Codes of Good Practice: Assurance, Standard-Setting, Impact Monitoring

Oversight Mechanisms: Third-Party Certification, Independent Accreditation Body

Risk-based approach

RSB & WWF

A long partnership



- 1 Played an active role in developing the RSB Standard
- 2 Partners on Projects: CORSIA, Feedstock Resource Assessments, Brazil
- 3 WWF acknowledges RSB as a preferred and trusted certification scheme

*“We need to transform global markets if we are to build a sustainable future. **RSB is key to setting biomaterials on a more sustainable footing.**”*

- Jim Leape, Former Director General, WWF International

*“One of few standards with balanced coverage of the criteria in both Certification Assessment Tool (CAT) sections on governance/organisational structure and environmental and social requirements. **RSB is the standard with the highest fulfilment rate** of the CAT requirements” – Searching for Sustainability Report*



Recognition

Support from independent aviation coalitions



In its May 2020 fact sheet and Sep 2020 “Waypoint 2050” report, the Air Transport Action Group claims “Sustainability is the most important aspect of SAF deployment and the industry works closely with organisations such as the Roundtable on Sustainable Biomaterials to implement global standards.” and identifies RSB as one of the easiest action today to accelerate energy transition.



The International Coalition for Sustainable Aviation's (ICSA) vision for a “zero climate impact” international aviation pathway towards 2050 endorses RSB as the “best-in-class sustainability certification standard for advanced aviation fuels”



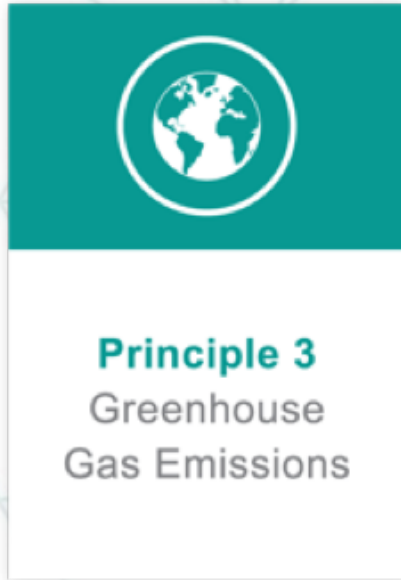
The Natural Resources Defense Council's (NRDC) 2017 Aviation Biofuel Scorecard encourages airlines to purchase only biofuels certified by a recognised third-party standard, with a strong preference for the RSB Standard as the most complete and likely to address these sustainability risks.



IUCN’s Betting on Best Quality report finds that RSB “covers more sustainability criteria, with greater detail, and with more breath in terms of level of assurance” than any of the other Voluntary sustainability schemes.

GHG Requirements

RSB GHG Calculator



ONE tool for THREE methodologies

1. RSB Global
2. RSB EU RED
3. RSB CORSIA

Simple navigation to move between supply chain steps

Instruction notes built into the tool – no user manual needed

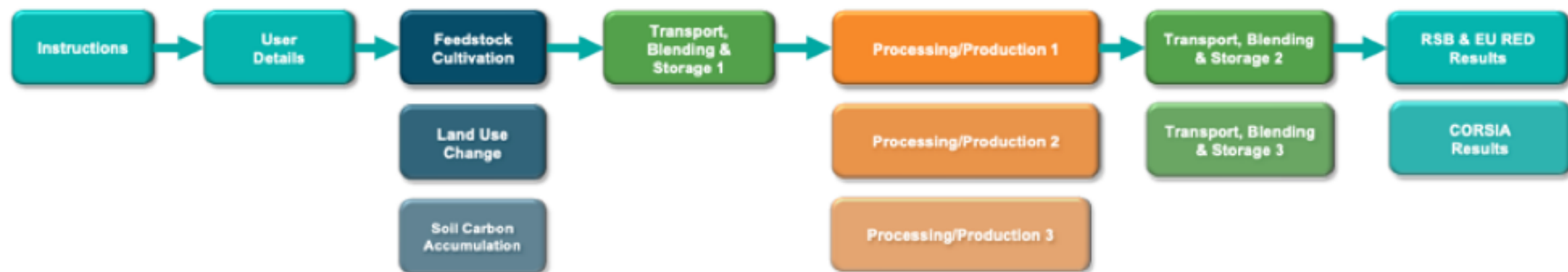
Emissions factors from Ecoinvent and Biograce included, but can be overwritten with actual values (to be verified by auditors)

Greenhouse Gas Calculator Tool

Roundtable on Sustainable Biomaterials (RSB)



Version: 2.11



Note: Click on the respective components of the above "flow diagram" to navigate to the relevant section.
The supply chain depicted above is an example supply chain. You can model your specific supply chain in the "Results" section.

Anyone applying for RSB certification is required to demonstrate a minimum 50% reduction of GHG from fossil fuels, or 60% if they are a new installation.

This tool is available to alternative fuel producers, processors, and all other parts of the supply chain.

The GHG calculator enables you to see easily whether you meet the RSB minimum 50%-60% reduction of GHG from fossil fuels.

[Home](#)

[Community](#)

[RSB Standard](#)

[Certification](#)

ABOUT US

The RSB offers trusted, credible tools and solutions for sustainability & biomaterials certification that mitigate business risk, fuel the bioeconomy and contribute to the UN Sustainable Development Goals in order to enable the protection of ecosystems and the promotion of food security.

CONTACT US

Impact Hub Geneva, Rue Fendt 1, 1201 Geneva | Switzerland

+41 22 534 90 50

info@rsb.org

Disclaimer

- The results of calculations made using this tool are not endorsed by RSB and RSB cannot be held liable for any actions resulting from the use of this tool.
 - The results of calculations made using this tool do not constitute an RSB certification and a claim cannot be made or publicised unless verified by RSB or an approved third-party auditor.
- © This tool and the associated formulae are the copyright of the Roundtable on Sustainable Biomaterials, 2019.

GHG requirements

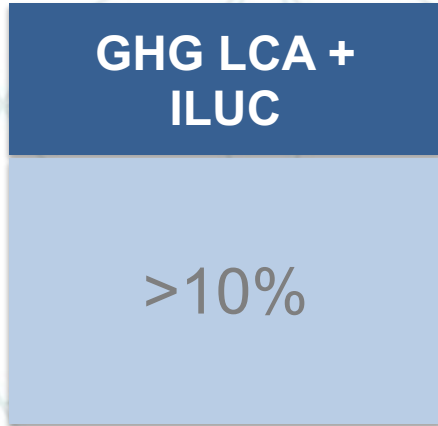


1. The operator shall ensure that the system used to calculate GHG emissions for actual LCA values accurately follows the **CORSIA LCA methodology** (already included in the RSB GHG Calculator)
2. The **system boundary** of the core LCA value calculation shall include the full supply chain of SAF production and use
3. Co-product energy allocation based on **lower heating value**
4. **Emission credits** recognised:
 - Landfill Emission Credit (LEC) for SAF derived from MSW
 - Recycling Emissions Credit (REC) for SAF derived from MSW

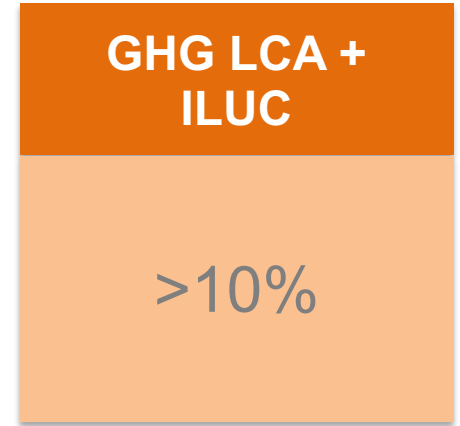
GHG reduction requirements



CORSIA requirement



RSB CORSIA requirement



CORSIA baseline = 89 g cO₂e/MJ

Example: SAF (ATJ) from Brazilian sugarcane ethanol



	Option 1	Option 2
GHG LCA	27	45
CORSIA ILUC value	8,7	8,7
Total GHG intensity	35,7	53,7

Values in g CO2 eq / MJ

CORSIA baseline	89	89
------------------------	-----------	-----------

Total saving GHG LCA only	62	44
Total saving GHG LCA + ILUC	53,3	35,3

% GHG reductions GHG LCA only	70%	49%
% GHG reductions GHG LCA + ILUC	60%	40%

CORSIA eligible?	Yes	
Qualifies for RSB certification?	Yes	No

Acceptance of Other Schemes

Acceptance of other schemes and CoC



- RSB operators may accept materials certified by other SCS if it has been recognised by ICAO.
- The operator shall select a CoC model and comply with all the requirements

**Identity
Preserved**

**Product
Segregation**

**Mass
Balance**

- RSB operator may forward materials certified by other SCS using the claim “ICAO CORSIA compliant”.

Next Steps: How RSB can support your sustainability journey

Advisory services



Supply chain

- Mapping of supply chains
- Sustainable feedstock assessments
- COC systems
- Gap analysis

GHG emissions

- GHG methodology training
- Review of GHG LCA
- GHG Calculator

RSB certification process

- Guidance and support for application
- Review of Environmental and Social Management Plan
- Stakeholder consultations

Sustainability protocols

- Key for decision for evaluation of feedstocks
- Roadmap for sustainability implementation

Membership



Profile your work and shape the future of sustainable fuels and materials

Expand your network and B2B opportunities

Shape standards and inform policy

Be part of a worldwide movement and demonstrate your commitment to sustainability

THANK YOU!

RSB Aviation Team



Carolina Grassi
carolina.grassi@rsb.org



Elena Schmidt
elena.schmidt@rsb.org



Arianna Baldo
arianna.baldo@rsb.org